

Seesaw - Student Login to CC/CC+ Classes

How to Log in to Seesaw (CC/CC+ Portfolios) Using Your Home Learning Code

Each student will receive a 'Home Learning Code' unique to them so they can access their CC or CC+ Seesaw portfolio.

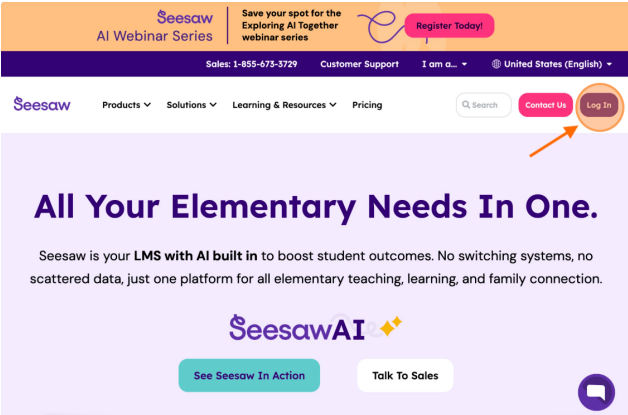
Each child has their own login information for privacy and will not be able to see other students' work.

Your teacher will email you a link to a PDF with step-by-step instructions. You can also follow the written instructions below for more detailed instructions.

Step 1: You can connect and log in to your child's portfolio in the following ways:


- On a desktop, laptop or Chromebook, by going to app.seesaw.me and clicking on "Log in" on the top right.
- On your mobile device via the **Seesaw app**.

Desktop



The desktop view of the Seesaw website features a navigation bar with 'Log In' in the top right corner. Below the navigation bar, the main content area includes the heading 'All Your Elementary Needs In One.' and a 'Log In' button.

Mobile Device



The mobile app view shows the Seesaw logo, the text 'Seesaw Teachers, students & families', and a prominent blue 'Open' button. Below this, there are statistics: 12K RATINGS (4.7 stars), AGES (4+ Years), CHART (#82 Education), and DEVELOPER (Seesaw Learning).

Step 2: Click on "I'm a Student"



I'm a Teacher

I'm a Student

I'm a Family Member

I'm a Seesaw Administrator

[Coppa Direct Notice](#), [Terms of Service](#) and [Privacy Policy](#) | [Browse Classroom Activities](#)

Step 3: Enter the text code or scan the QR code sent by your teacher, then click "Go". The image below (left) shows a sample of the PDF you would have received from your teacher.

Classroom Sign In Code for Lastname 2025-26

1. Go to <https://app.seesaw.me> on a computer. Or install the Seesaw Class App on an iOS or Android device.



2. Choose "I'm a Student".



3. Scan this Classroom Code using Seesaw's built-in QR code scanner.



For classroom use at school only. This code is a password. If you have this code, you can access everything in this class.

Do not post codes on social media or in any publicly accessible place on the Internet!

Email

Password

Student Sign In

Forgot Password?

Sign in with



or

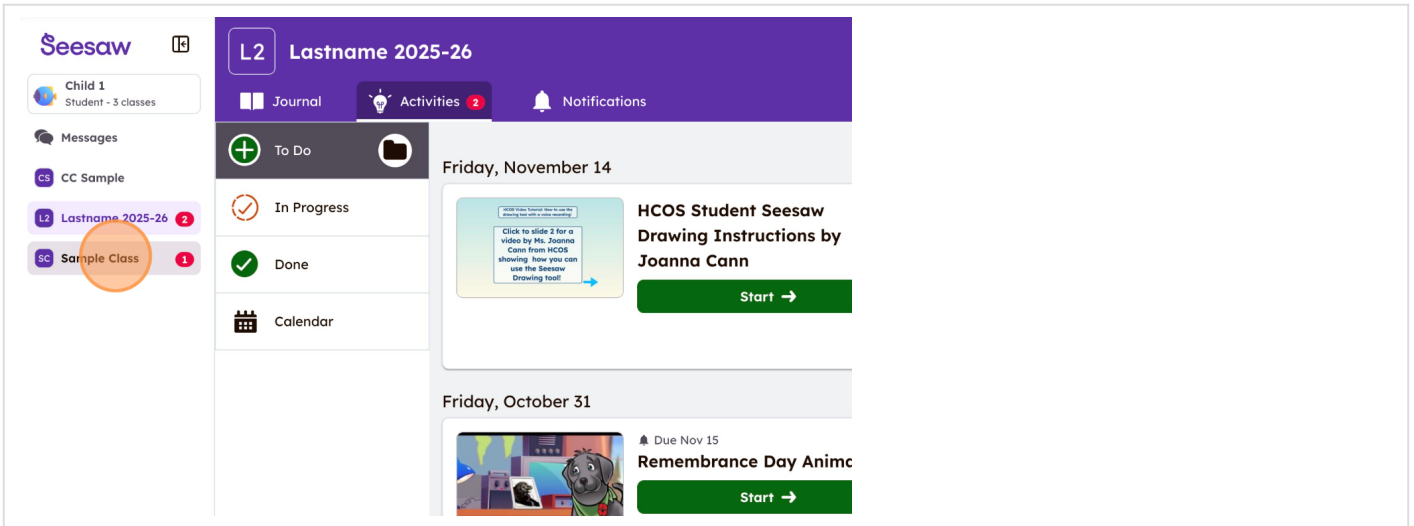
Go

Scan Code

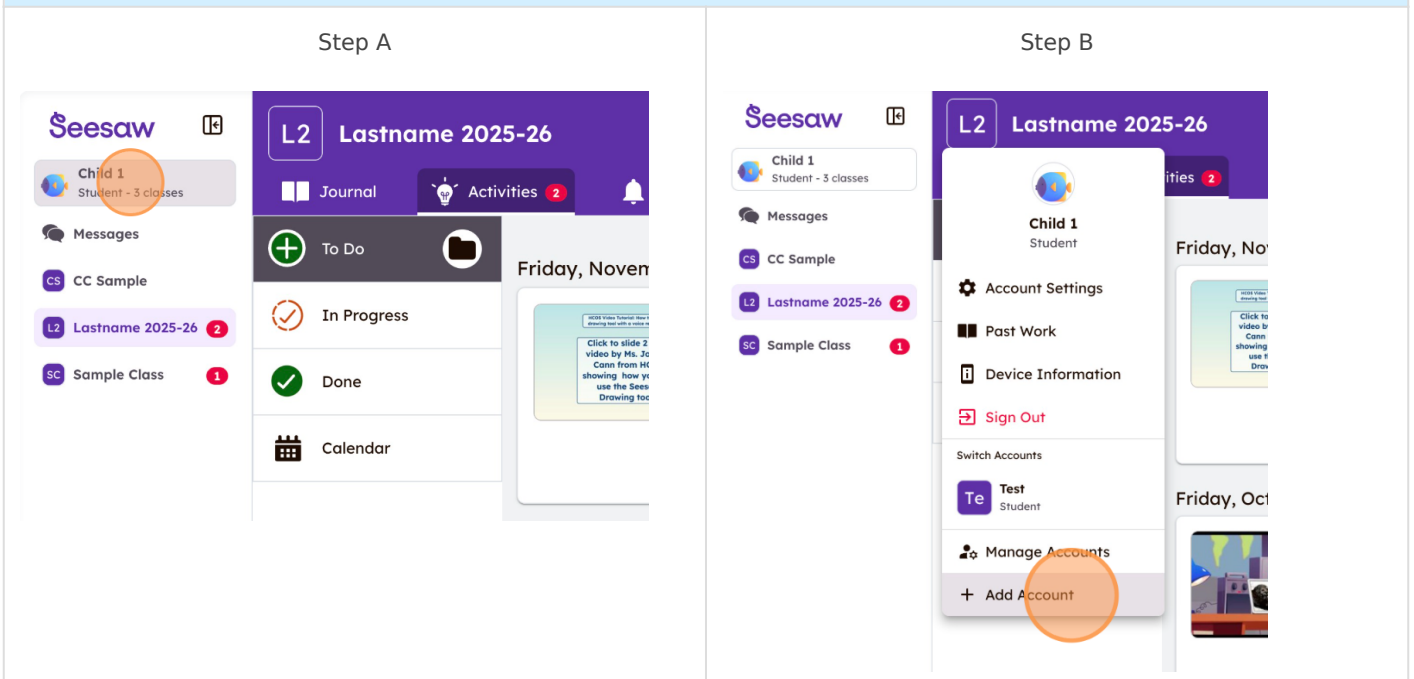
[Student Privacy Policy](#)

[COPPA Direct Notice](#)

Step 4: You are now in your class! Other Seesaw classes your child is part of will appear on the left side of your screen. After this initial setup, you should not need to sign in again unless you sign yourself out.



Step 5: If you need to add a second student account, click your child's name in the top-left (Step A below), then select **"Add Account"** (Step B below), which will take you back to Step 2 above. To learn how to toggle between accounts, go [here](#).



Revision #9

Created 3 October 2025 16:33:13 by Jeff Laird

Updated 8 January 2026 20:47:53 by Dawn Denham